

AGFG1 Antibody (N-term)
Affinity Purified Rabbit Polyclonal Antibody (Pab)
Catalog # AP16184a**Specification**

AGFG1 Antibody (N-term) - Product Information

Application	WB,E
Primary Accession	P52594
Other Accession	Q4KLH5 , Q8K2K6 , Q2TA45 , NP_004495.2 , NP_001128661.1 , NP_001128660.1
Reactivity	Human
Predicted	Bovine, Mouse, Rat
Host	Rabbit
Clonality	Polyclonal
Isotype	Rabbit IgG
Calculated MW	58260
Antigen Region	1-30

AGFG1 Antibody (N-term) - Additional Information**Gene ID** 3267**Other Names**

Arf-GAP domain and FG repeat-containing protein 1, HIV-1 Rev-binding protein, Nucleoporin-like protein RIP, Rev-interacting protein, Rev/Rex activation domain-binding protein, AGFG1, HRB, RAB, RIP

Target/Specificity

This AGFG1 antibody is generated from rabbits immunized with a KLH conjugated synthetic peptide between 1-30 amino acids from the N-terminal region of human AGFG1.

Dilution

WB~~1:1000

E~~Use at an assay dependent concentration.

Format

Purified polyclonal antibody supplied in PBS with 0.09% (W/V) sodium azide. This antibody is purified through a protein A column, followed by peptide affinity purification.

Storage

Maintain refrigerated at 2-8°C for up to 2 weeks. For long term storage store at -20°C in small aliquots to prevent freeze-thaw cycles.

Precautions

AGFG1 Antibody (N-term) is for research use only and not for use in diagnostic or therapeutic procedures.

AGFG1 Antibody (N-term) - Protein Information

Name AGFG1

Synonyms HRB, RAB, RIP

Function Required for vesicle docking or fusion during acrosome biogenesis (By similarity). May play a role in RNA trafficking or localization. In case of infection by HIV-1, acts as a cofactor for viral Rev and promotes movement of Rev-responsive element-containing RNAs from the nuclear periphery to the cytoplasm. This step is essential for HIV-1 replication.

Cellular Location

Nucleus. Cytoplasmic vesicle

Tissue Location

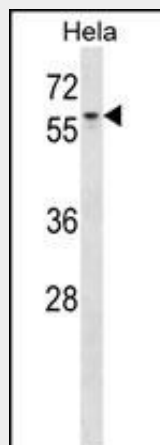
Ubiquitously expressed.

AGFG1 Antibody (N-term) - Protocols

Provided below are standard protocols that you may find useful for product applications.

- [Western Blot](#)
- [Blocking Peptides](#)
- [Dot Blot](#)
- [Immunohistochemistry](#)
- [Immunofluorescence](#)
- [Immunoprecipitation](#)
- [Flow Cytometry](#)
- [Cell Culture](#)

AGFG1 Antibody (N-term) - Images



AGFG1 Antibody (N-term) (Cat. #AP16184a) western blot analysis in HeLa cell line lysates (35ug/lane). This demonstrates the AGFG1 antibody detected the AGFG1 protein (arrow).

AGFG1 Antibody (N-term) - Background

The protein encoded by this gene is related to nucleoporins, a class of proteins that mediate nucleocytoplasmic transport. The encoded protein binds the activation domain of the human immunodeficiency virus Rev protein when Rev is assembled onto its RNA target, and is required for the nuclear export of

Rev-directed RNAs. Multiple transcript variants encoding different isoforms have been found for this gene.

AGFG1 Antibody (N-term) - References

Bowes, J.D., et al. Pharmacogenet. Genomics 19(4):319-323(2009)
Chaineau, M., et al. J. Biol. Chem. 283(49):34365-34373(2008)
Pryor, P.R., et al. Cell 134(5):817-827(2008)
Sugiyama, N., et al. Mol. Cell Proteomics 6(6):1103-1109(2007)
Olsen, J.V., et al. Cell 127(3):635-648(2006)